



**Product Name: TX**

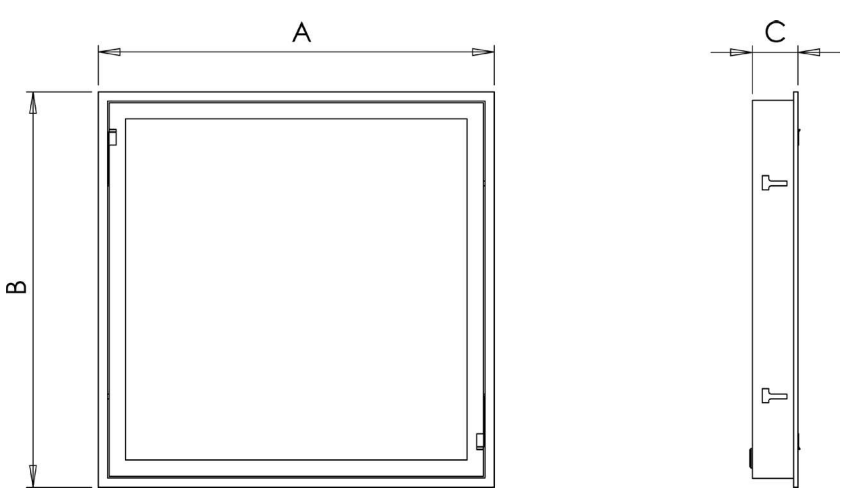
## General information

- This luminaire must be installed in accordance with the latest edition of the IET Wiring Regulations and local Building Regulation by a qualified competent person.
- The mains power supply must be turned off before inspection, installation or removal of the luminaire, ensuring that the supply is locked off to prevent inadvertently switching the supply on.
- It is the installer's responsibility to ensure that the installation is suitable for the total load of the luminaire(s). The supply cable fuses/circuit breakers must be correctly rated for the electrical load and taking into account for any transient inrush currents that may occur.
- It is the installer's responsibility to ensure that the environmental operating and storage conditions are complied with and that any fire risks are considered.
- Do not perform insulation strength or insulation resistance tests on the installation with the luminaire(s) connected, this can damage the luminaires and give erroneous readings.
- Do not loop-in supply cables at the luminaire supply terminals unless there is provision for 2-way connection at the terminals.
- The light source contained in this luminaire must only be replaced by TamLite Lighting or an appointed service agent.
- Emergency lighting luminaires must be installed and maintained in accordance with the emergency lighting standard BS 5266-1.
- To ensure that the product warranty remains valid, the luminaire must be installed and maintained in accordance with these installation instructions and the product must not be modified in any way.

-  Luminaires marked with this symbol must not be covered with thermally insulating material.
-  This symbol on covers over light sources indicates dangerous live parts do not operate the luminaire with this cover removed.

## Dimensions

	A (mm)	B (mm)	C (mm)	Cut-Out
TXR66290 / TXR66330 / TXR66390 / TXR66430	597	597	76	582x582
TXR123390 / TXR123430	1197	297	76	1182x282
TXR126780 / TXR126860	1197	597	76	1182x582

The diagrams illustrate the dimensions of the luminaire. Dimension A is the width, B is the height, and C is the depth. The front view shows a square luminaire with dimensions A and B. The side view shows the depth C and the mounting brackets.

**Page 1 of 5**

Tamlite Technical  
Stafford Park 12,  
Telford, Shropshire,  
TF3 3BJ

+44(0)1952 292441  
technical@tam-lite.co.uk  
Document No: V3



## Product Name: TX - LAY IN INSTALLATION

<p><b>1</b></p> <p>Remove the product from its packaging.</p>	<p><b>2</b></p> <p>Release the Diffuser panel from the luminaire by opening the release arms.</p>
<p><b>3</b></p> <p>Open the diffuser frame to access the internal components.</p>	<p><b>4</b></p> <p>Bring incoming supply cable to the intended luminaire position.</p>
<p><b>5</b></p> <p>Bring supply cable through cable entry gland.</p>	<p><b>6</b></p> <p>Terminations shown for standard and emergency variants.</p>
<p><b>7</b></p> <p>Terminations shown for DALI dimmable and DALI emergency variants.</p>	<p><b>8</b></p> <p>Reattach diffuser.</p>

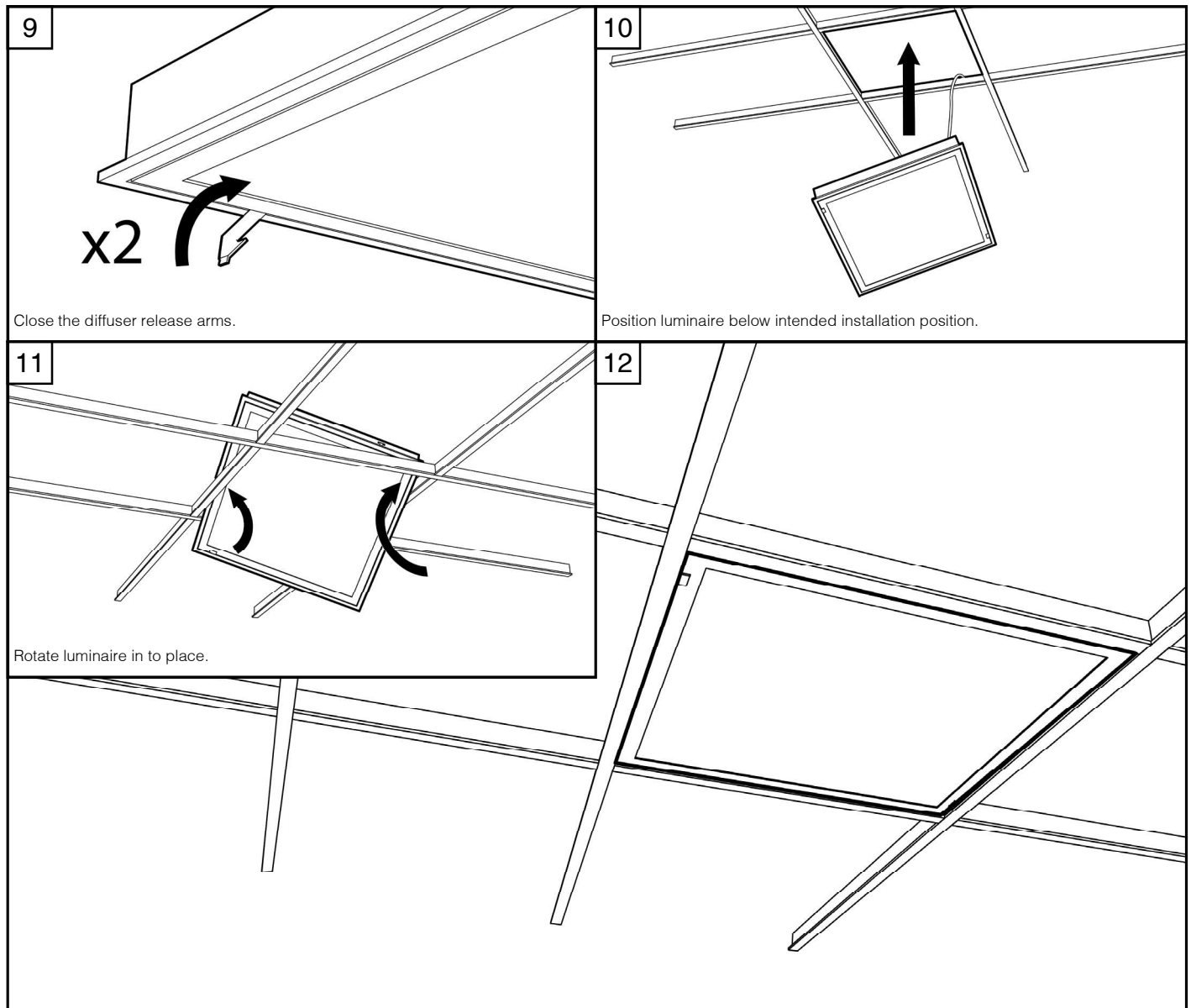
### Page 2 of 5

Tamlite Technical  
 Stafford Park 12,  
 Telford, Shropshire,  
 TF3 3BJ

+44(0)1952 292441  
 technical@tamlite.co.uk  
 Document No: V3

			220-240V 50/60Hz		IP65	IK08	TP(a)	ta 0°C to 25°C 5°C to 25°C for M3 variants
--	--	--	---------------------	--	------	------	-------	---

## Product Name: TX - LAY IN INSTALLATION



### Page 3 of 5

Tamlite Technical  
Stafford Park 12,  
Telford, Shropshire,  
TF3 3BJ

+44(0)1952 292441  
technical@tamllite.co.uk  
Document No: V3



<p>1</p> <p>Remove the product from its packaging.</p>	<p>2</p> <p>Release the Diffuser panel from the luminaire by opening the release arms.</p>
<p>3</p> <p>Open the diffuser frame to access the internal components.</p>	<p>4</p> <p>Install appropriate support battens to the rear of the installation point.</p>
<p>5</p> <p>Position the luminaire below the installation point.</p>	<p>6</p> <p>Bring supply cable through cable entry gland and align the panel in to position.</p>
<p>7</p> <p>Install lumifix brackets in all four points on the luminaire body.</p>	<p>8</p> <p>Adjust the panel height and rotate the buckle to lock the brackets in place.</p>

Product Name: TX - PLASTERBOARD INSTALLATION

**9**

Terminations shown for standard and emergency variants.

**10**

Terminations shown for DALI dimmable and DALI emergency variants.

**11**

Reattach diffuser.

**12**

Close the diffuser release arms.

**13**