

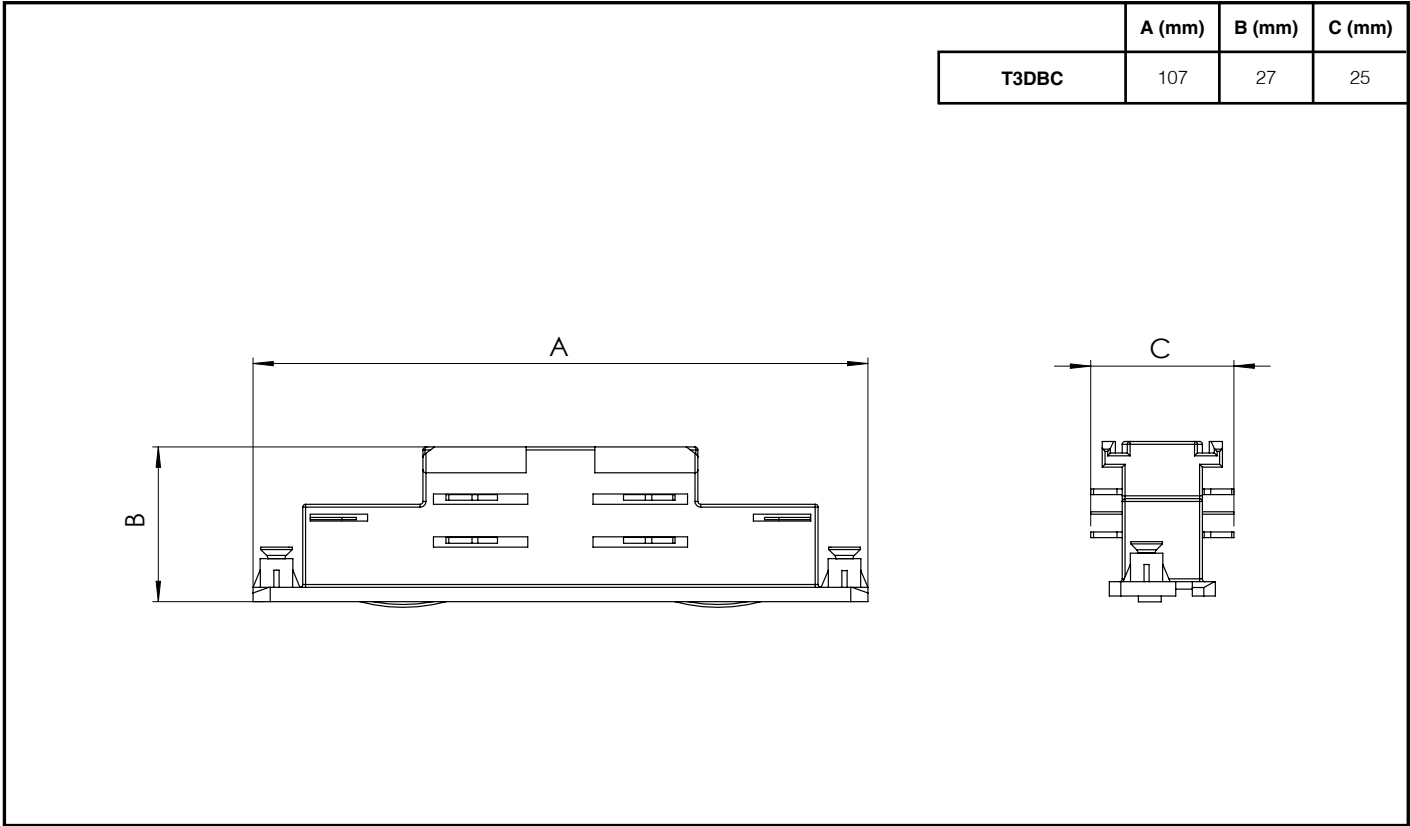


Product Name: TRIO TRACK BUTT CONNECTOR

General information

- This product must be installed in accordance with the latest edition of the IET Wiring Regulations and local Building Regulation by a qualified competent person.
- The mains power supply must be turned off before inspection, installation, or removal of the product, ensuring that the supply is locked off to prevent inadvertently switching the supply on.
- It is the installer’s responsibility to ensure that the environmental operating and storage conditions are complied with and that any fire risks are considered.
- To ensure that the product warranty remains valid, the track system must be installed and maintained in accordance with these installation instructions and the product must not be modified in any way.
- For use with Tamlite TRIO Track only.

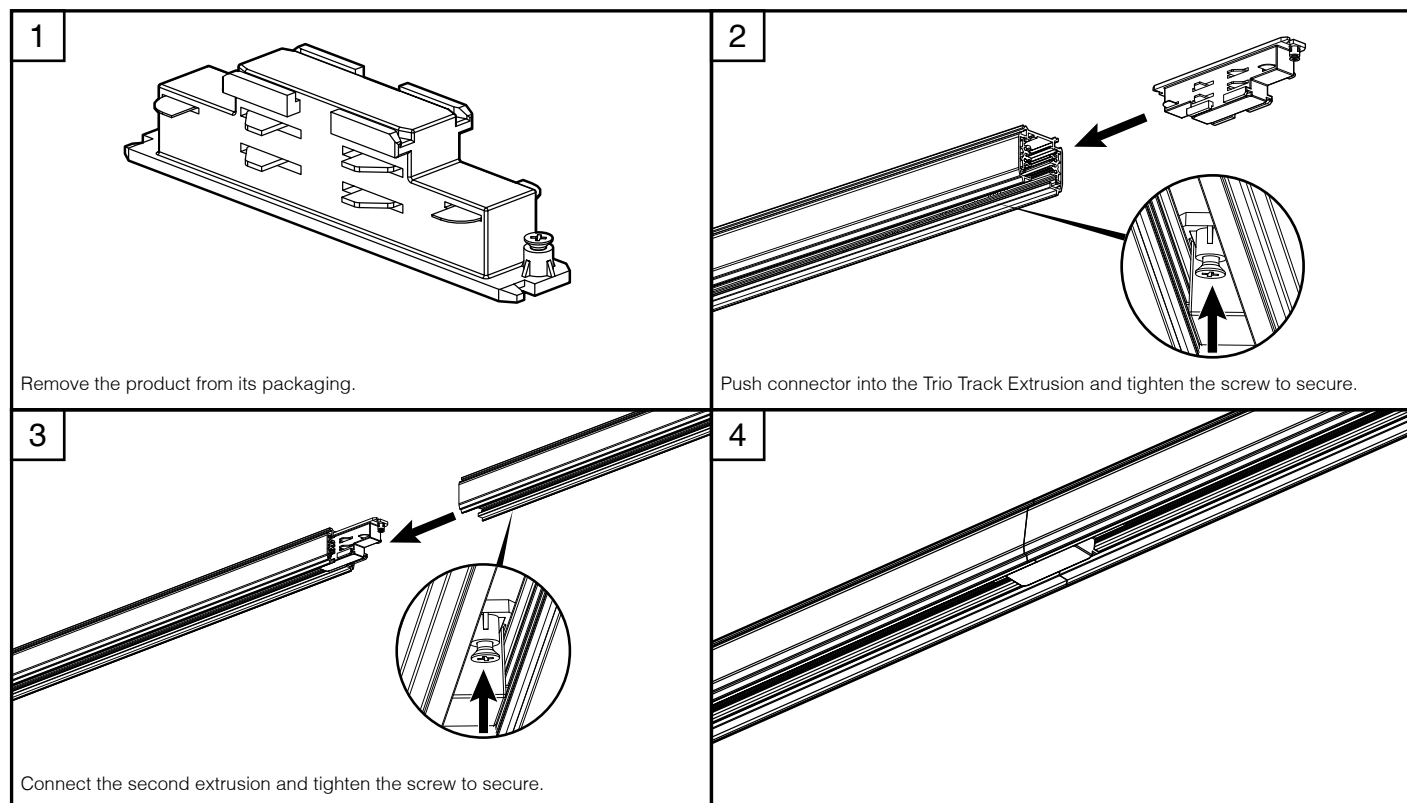
Dimensions



# INSTALLATION & OPERATING INSTRUCTIONS



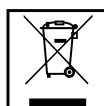
**Product Name: TRIO TRACK BUTT CONNECTOR**



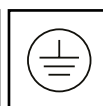
## Page 2 of 2

Tamlite Technical  
Stafford Park 12,  
Telford, Shropshire,  
TF3 3BJ

+44(0)1952 292441  
technical@tamlite.co.uk  
Document No: V1



220-240V  
50/60Hz



IP20

IK04

ta  
0°C to 25°C