

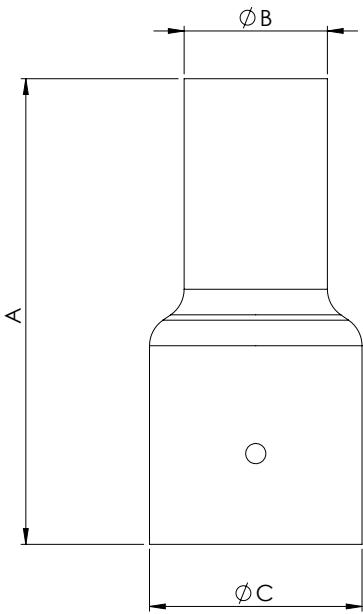


Product Name: COLUMN SPIGOT ADAPTOR

General information

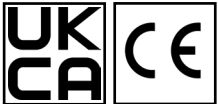
- It is the installer's responsibility to ensure that the installation is suitable for the total load of the product(s).
- To ensure that the product warranty remains valid, the product must be installed and maintained in accordance with these installation instructions and the product must not be modified in any way.

Dimensions



	A (mm)	B (mm)	C (mm)	Column (mm)
TCSPIG76/50	200	50	89	76
TCSPIG76/60	200	60	89	76
TCSPIG89/60	250	60	100	89
TCSPIG89/76	250	76	100	89
TCSPIG114/60	400	60	127	114
TCSPIG140/76	400	76	150	140

Picture for illustration purpose only.



Product Name: COLUMN SPIGOT ADAPTOR

